



California Regional Manufacturing Center (CA RMC)

Dale Turner

CA RMC Director

April 28, 2017

A satellite view of the Earth at night, showing the Western Hemisphere. The United States is the most prominent feature, with its cities and population centers glowing with yellow and white lights. The rest of the world, including parts of Europe, Africa, and South America, is visible in the shadows, with some lights also visible. The Earth's curvature is visible at the top and bottom of the frame, and the background is a dark, starry space.

Accelerating
Your Smart Manufacturing Transformation

Overview

- Smart Manufacturing?
- Why CESMII, the Smart Manufacturing Institute
- CA-RMC Team
- Demonstration Centers



What is Smart Manufacturing?

The ability to take action, in real time, to **OPTIMIZE** assets in the context of business strategies and imperatives

Affordable, Accessible, Innovative and Secure
 Intelligent, Seamless & Collaborative
 Networked-Based, Smart Manufacturing

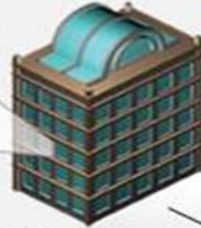


Connected Supply Chain

- Agile
- Demand Driven
- Raw Material to Finished Product



Business Systems, ERP

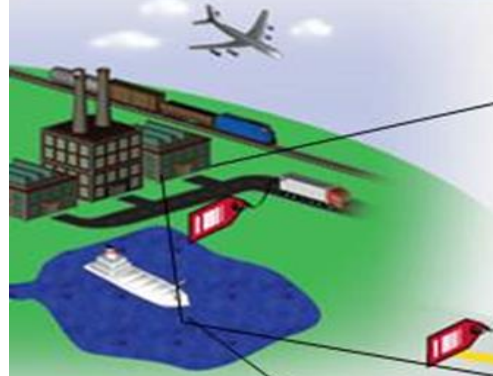


Sustainable Production

- Higher value products
- Data for decision making
- Product Lifecycle Management

Safe Production

- Improved safety
- Fewer incidents
- More user friendly



Supply Chain



Smart Factory

Distribution Center



Customer



Smart Grid

Energy Efficient

- Lower emissions
- Less energy used
- Green manufacturing

Optimization

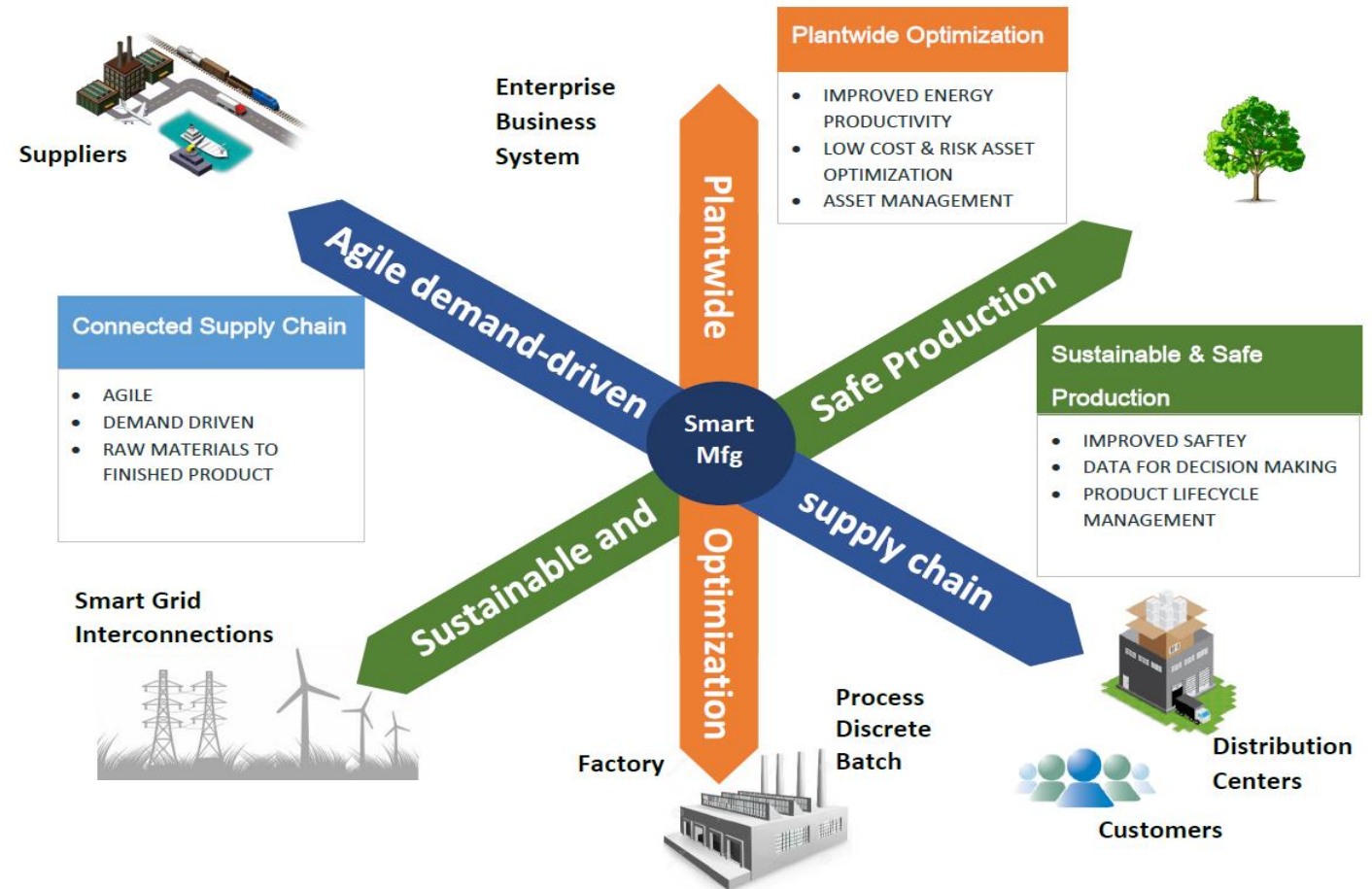
- Asset Utility/Zero Downtime
- Quality/Zero Defects
- Reliable results

Smart Manufacturing

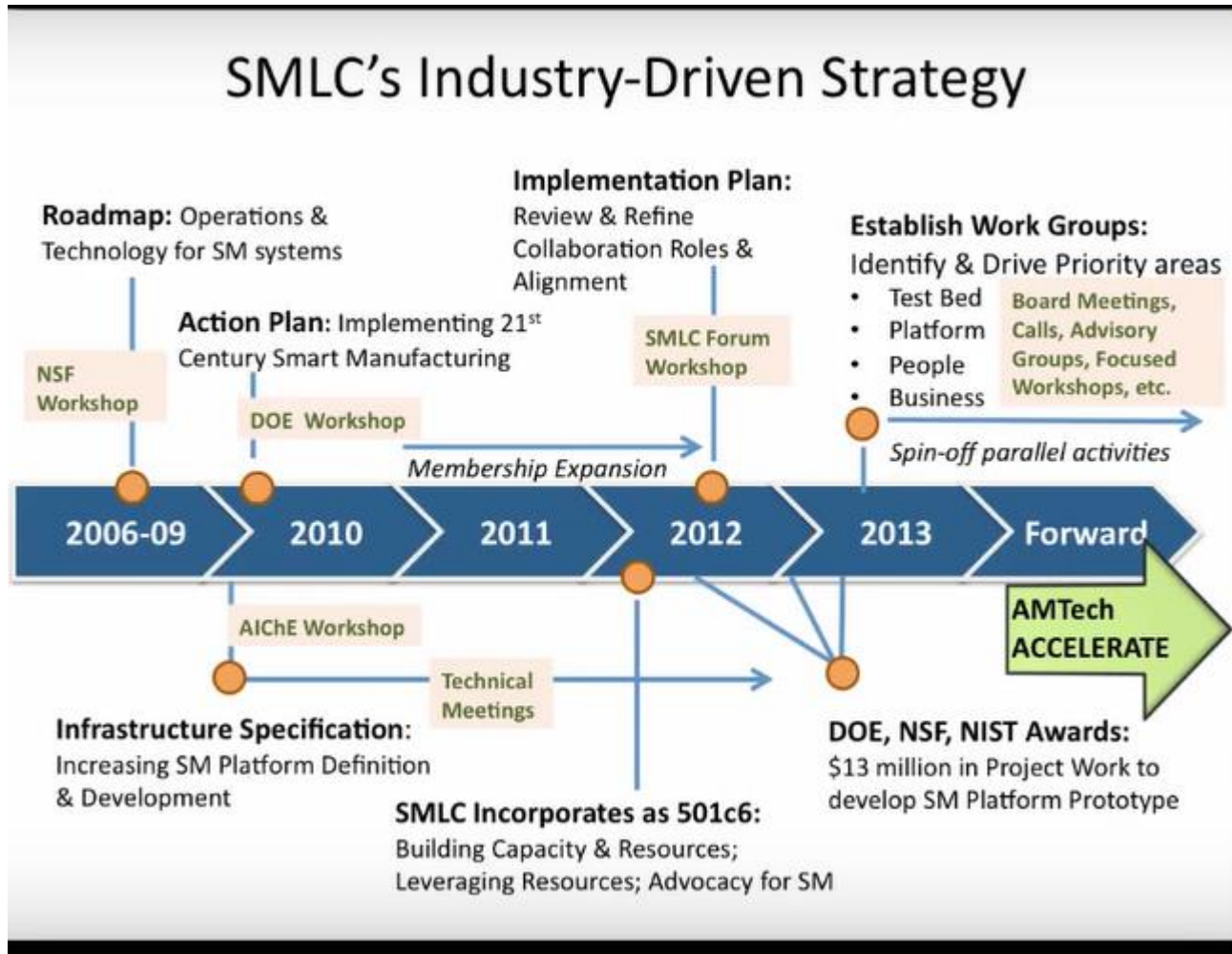
A Comprehensive Approach to Manufacturing

...to achieve:

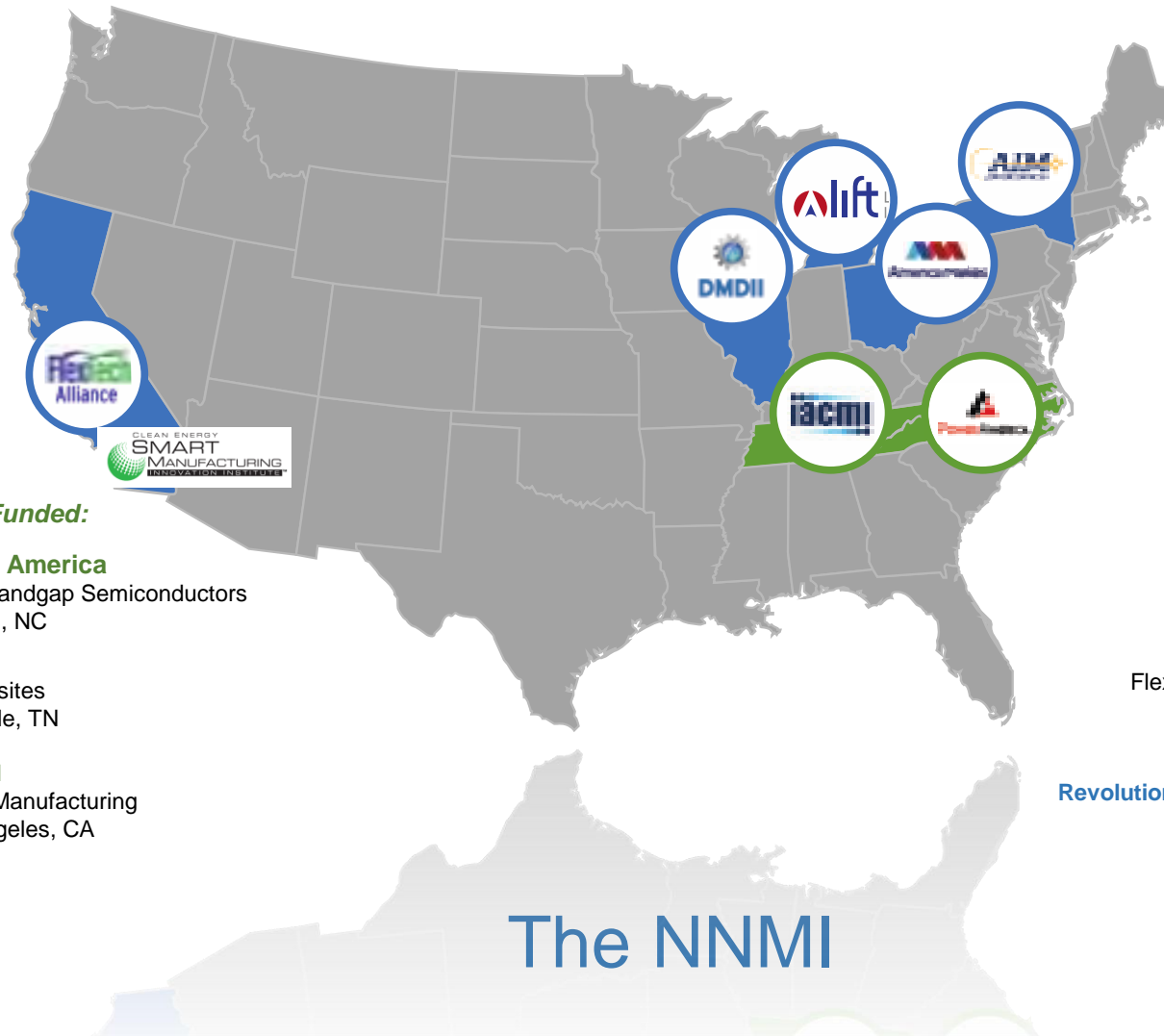
- Connected Supply Chain
- Plantwide Optimization
- Sustainability & Safety
- Increased Productivity
- Effective Risk Management
- High Quality Products
- Innovation
- Great Customer Service



SMLC and CESMII Road



- DOE defined industry's requirements for Smart Manufacturing.
- DOE released RFP for Smart Manufacturing FY15.
- SMLC and others submitted response.
- DOE awarded contract to SMLC FY16.
- SMLC and DOE jointly outlined program objectives, FY16.
- SMLC created CESMII to be the preforming institute FY16.
- CESMII kickoff event held at UCLA Fed 23rd.
- Program infrastructure phase 1 standing up, 6 months.
- We are here today.



DOE Funded:

Power America

Wide Bandgap Semiconductors
Raleigh, NC

IACMI

Composites
Knoxville, TN

CESMII

Smart Manufacturing
Los Angeles, CA

DOD Funded:

America Makes

3D Printing / Additive
Manufacturing
Youngstown, OH

DMDII

Digital Manufacturing
& Design
Chicago, IL

LIFT

Lightweight Metals
Detroit, MI

AIM Photonics

Photonics
Rochester, NY

FLEXTECH Alliance

Flexible Hybrid Electronics
San Jose, CA

Unawarded Institutes:

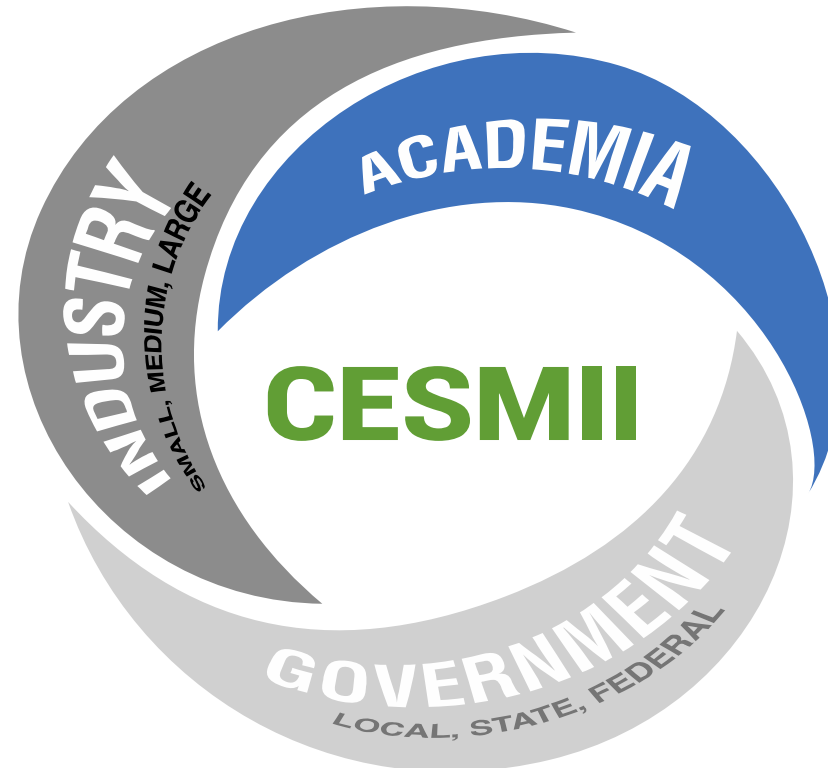
Revolutionary Fibers & Textiles

The NNMI

A National Network of Institutes focused on advanced manufacturing technologies

Smart Manufacturing:

Advancing Sensing, Controls, Platforms & Modeling for Manufacturing



\$140+ Million in Public-Private Investment

CESMII Objectives



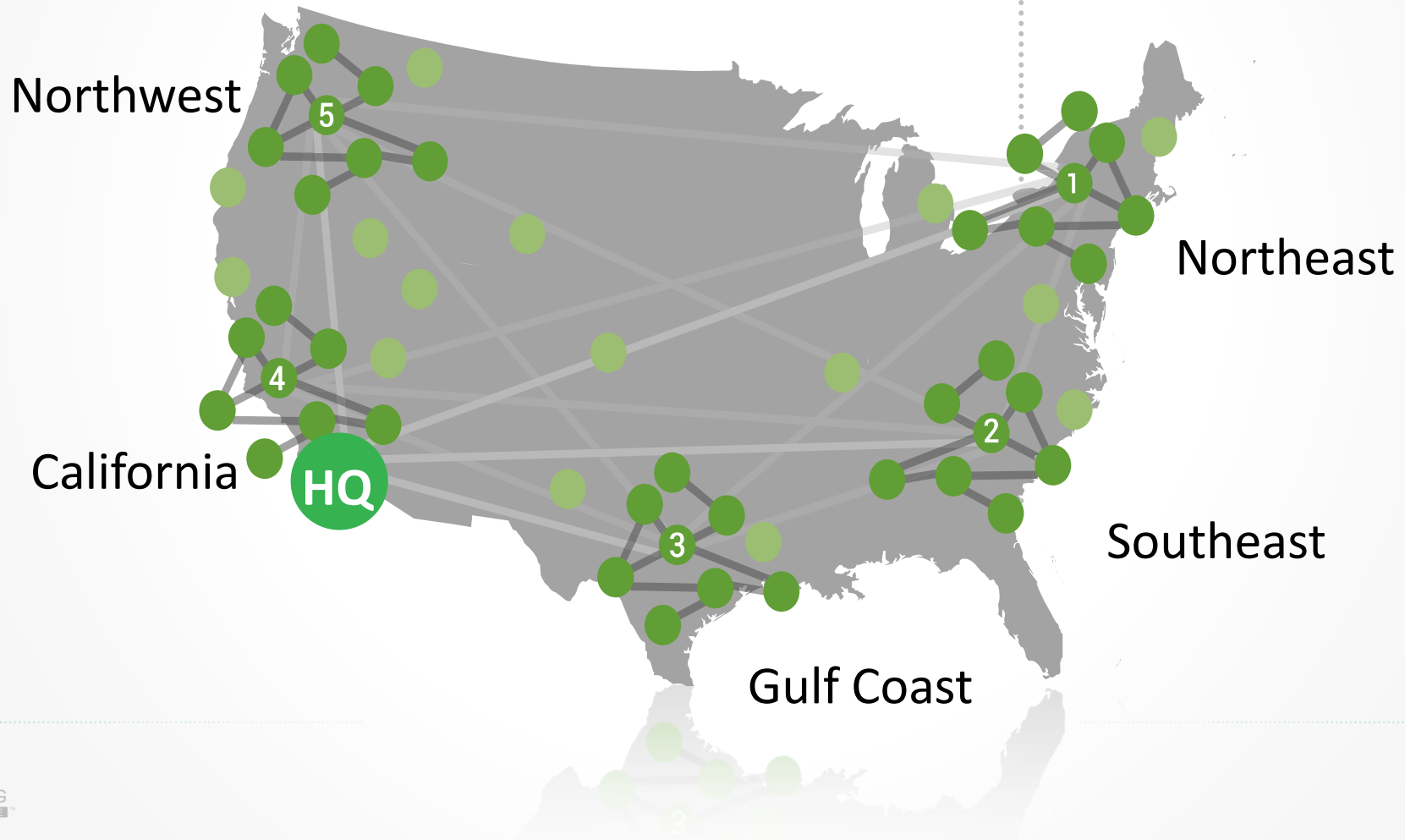
Our Institute will:

- Provide Breakthrough Capability to Drive Energy Reduction by \$195 B
- Be Industry Led and Driven
- Service all Manufacturing Segments
- Develop the Workforce and Job Creation
- Be Open to All Size of enterprises
- Achieve Financial Independence in 5 Years or less

CESMII

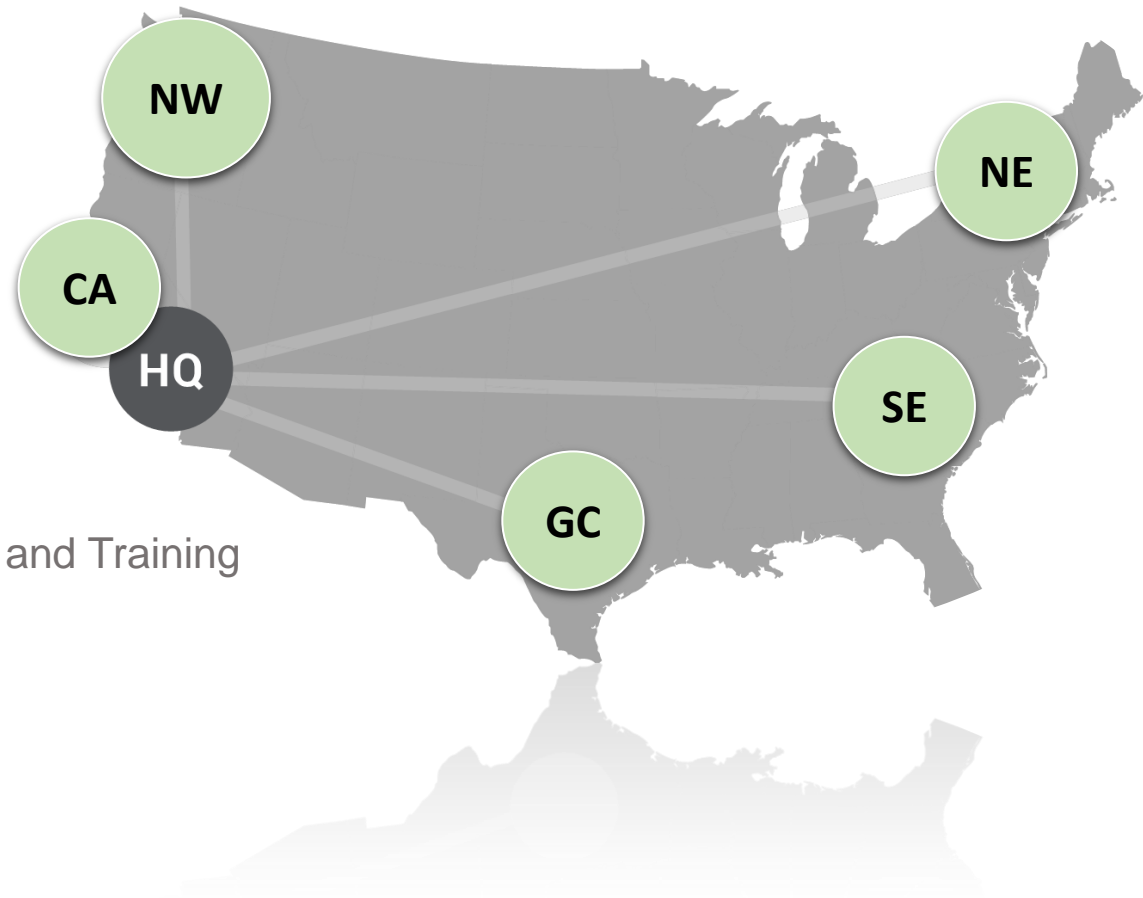
A National Network of Capability

Headquartered in LA

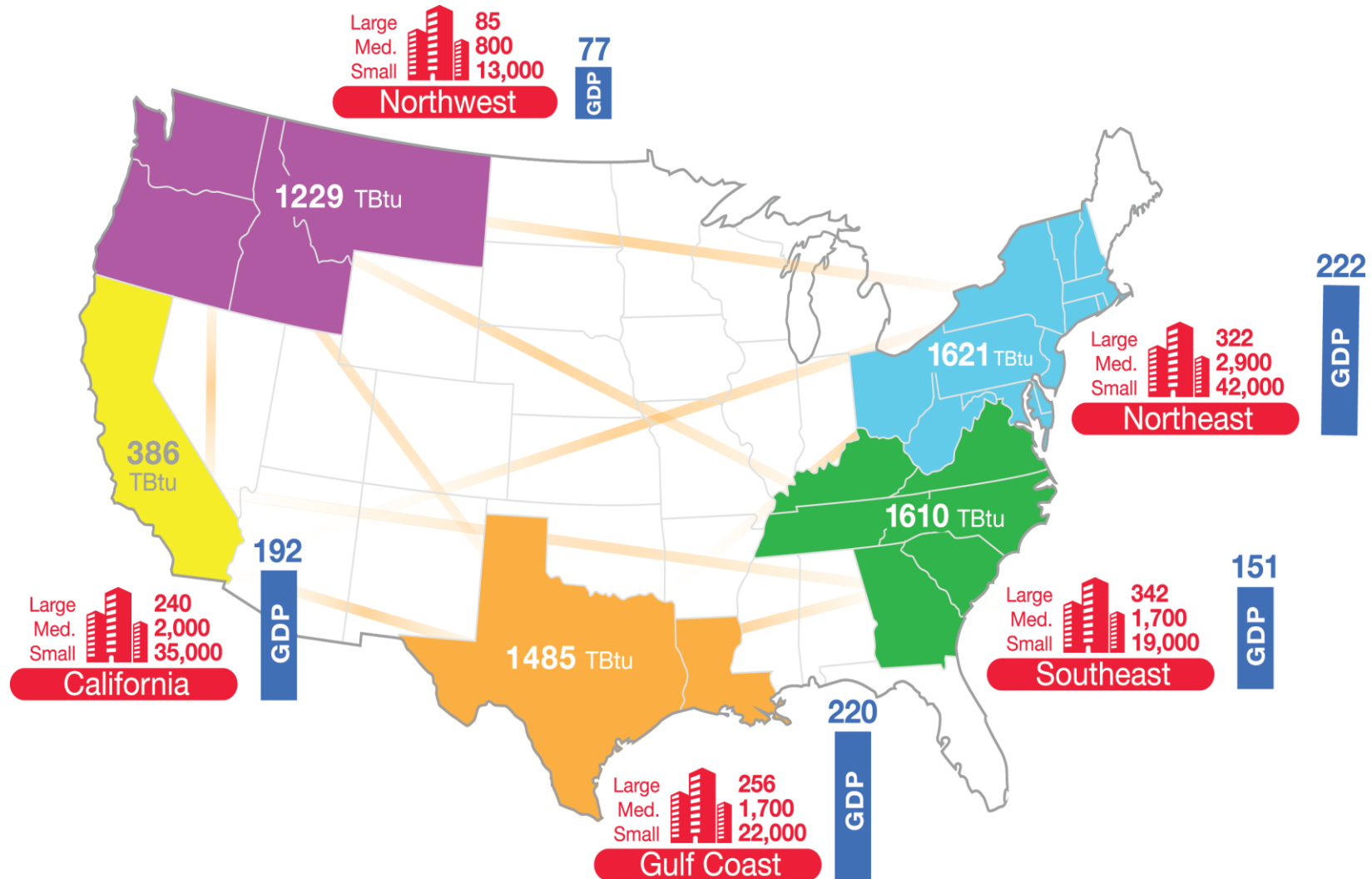


The Regional Manufacturing Centers

- Test Bed Pipeline
- Drive Membership
- Develop Technology
- Implement SM Projects
- Participate in CESMII LRP
- Regional Workforce Development and Training
- Members of Advisory Committees
- Regional Budget Management

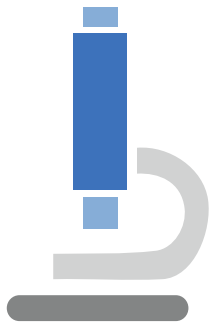


US Manufacturing Has Regional Diversity



Regional Centers

Each regional center is operated according to three key tenets:



R&D

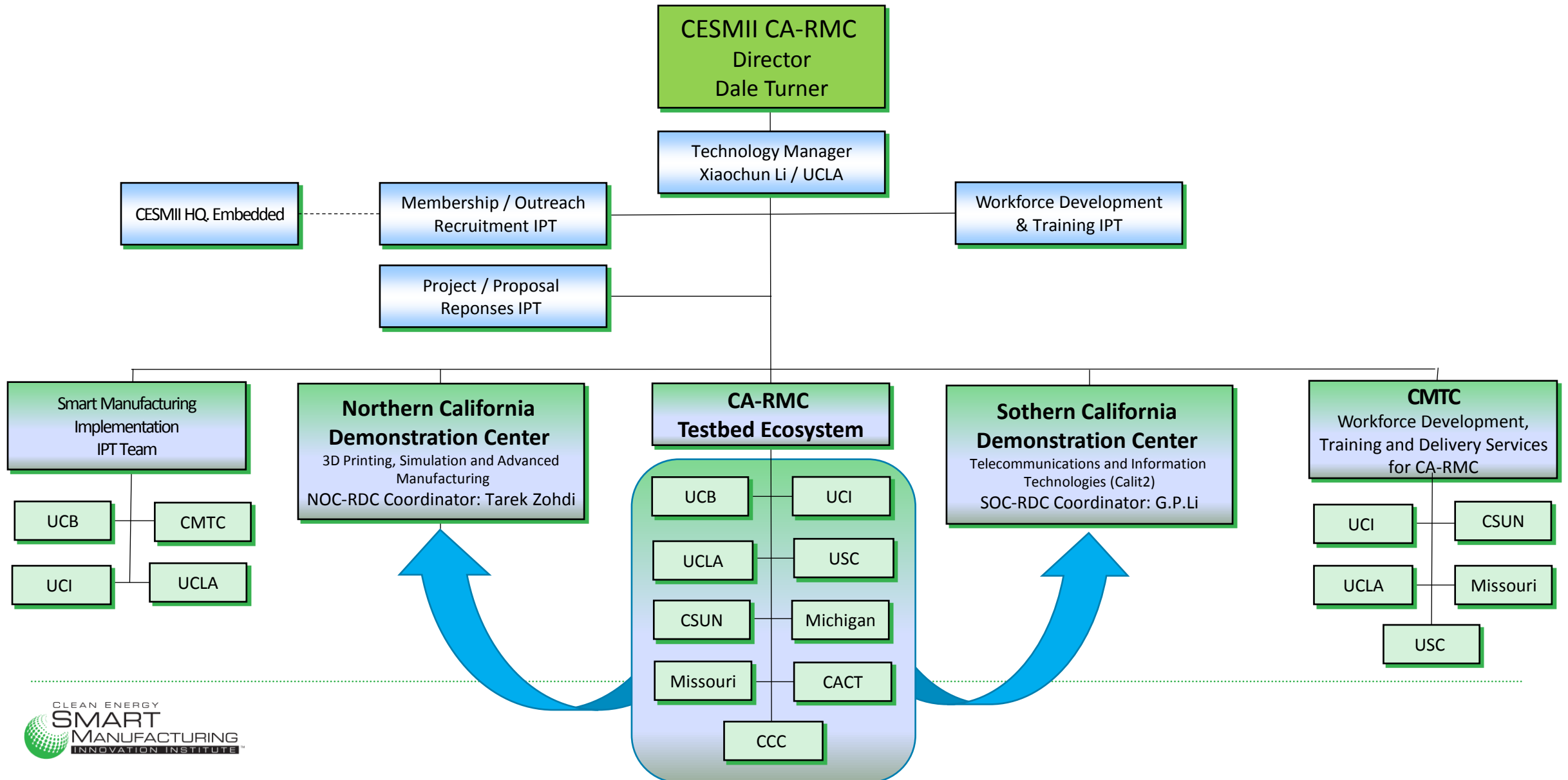


Workforce Development



Testbed Infrastructure

CA RMC Team



Smart Manufacturing Capabilities

CA RMC contains a wealth of Smart Manufacturing capabilities...

	University of California Berkeley (UCB)	University of California Irvine (UCI)	University of California Los Angeles (UCLA)	University of Southern California (USC)	California State University Northridge (CSUN)	California Community Colleges (CCC)	Centers for Applied Competitive Technologies (CACTs)	Michigan Technological University (MTU)	Missouri University of Science & Technology (MS&T)
Unique Technical Capabilities	<ul style="list-style-type: none"> • Internet of Things (IoT) • Modeling & Control • High Performance Computing • Hybrid robotically-enabled manufacturing systems 	<ul style="list-style-type: none"> • Smart worker IIoT workflow • Ultra precision sensing • Semiconductor process design & control • Augmented Reality / Virtual Reality (AR/VR) workflow modeling 	<ul style="list-style-type: none"> • Sensors, wireless systems & control • Cyber security • Micro/Nano design & fabrication • Science-based & data-based modeling • Smart manufacturing platform 	<ul style="list-style-type: none"> • Robotics & Automation • Internet of Things (IoT) • Sensors • High Performance Computing • Data Analytics • Modeling and Simulation • Systems Architecting and Engineering 	<ul style="list-style-type: none"> • Software development & software systems • Advanced Sensors • Real Time Analysis & Control Systems • Advanced High Fidelity Modeling • Advanced Manufacturing, Composites 	<ul style="list-style-type: none"> • Automation & Robotics Technologies • Electric & Hybrid Automotive Technology • Electrical Systems & Power Transmission • Electro-Mechanical Technology • Machining & Machine Tools 	<ul style="list-style-type: none"> • Automation • Carbon Fiber Composites Manufacturing • Electronics Technology • Industrial Automation • Mechatronics • Machining & CNC Programming • Nano-technology • Photonics • Robotics 	<ul style="list-style-type: none"> • Process Simulation • System Analysis • Bioenergy production • Clean Energy manufacturing 	<ul style="list-style-type: none"> • Peaslee Steel Manufacturing Research Center • MidAmerica Regional Microgrid Education & Training • Advanced sensors • Multi-scale, multi-physics modeling & simulation

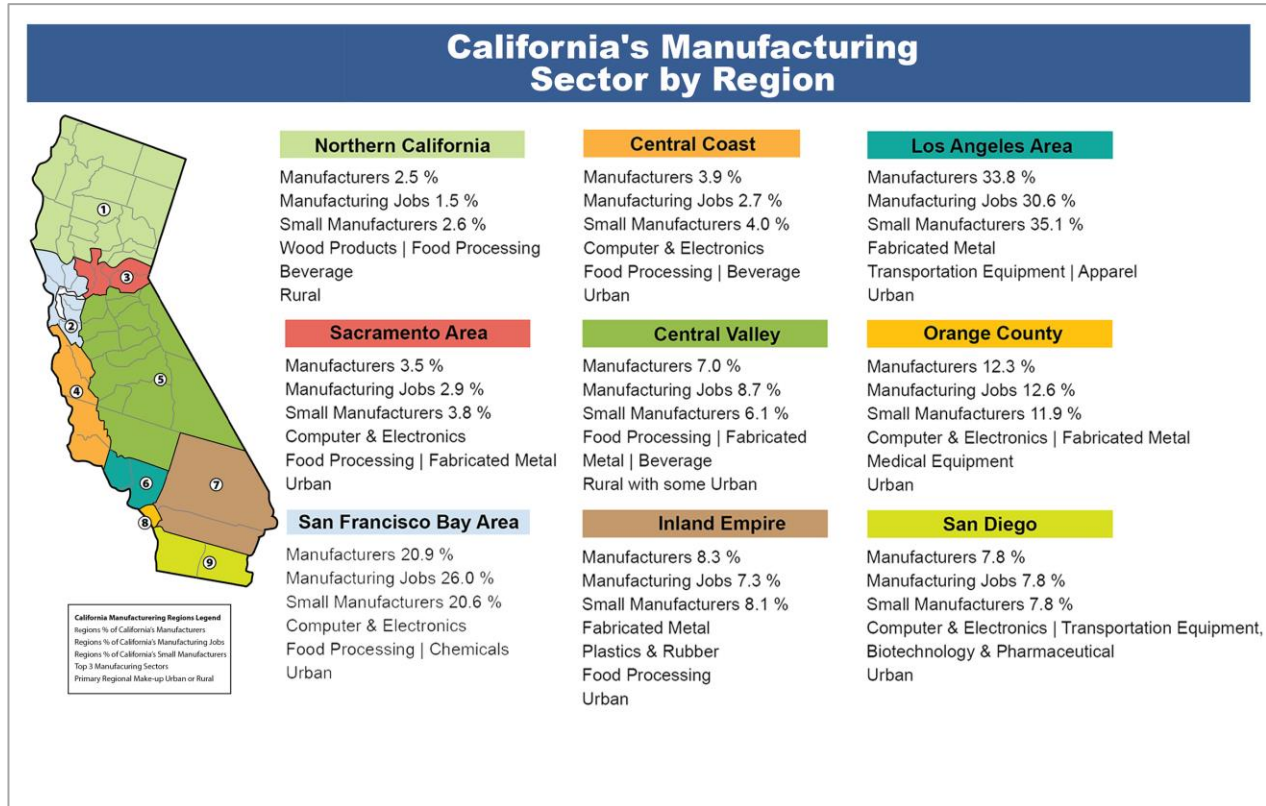
Smart Manufacturing domain expertise

CA RMC Smart Manufacturing knowledge by industry's...

	Petroleum & Coal Products	Primary Metals	Food & Beverage Processing	Chemicals	Non-Metallic Mineral Products	Paper Products	Fabricated Metal Products
Technical Domain Expertise	<ul style="list-style-type: none"> • Life Cycle Analysis • Bioenergy production • Petroleum Production & Engineering • Energy Data Management & Analysis • Energy Instrumentation 	<ul style="list-style-type: none"> • Additive manufacturing (metal-based 3D Printing) • Solidification processing • Light metals • Metallic nano-composites 	<ul style="list-style-type: none"> • Chemicals and biologicals analysis 	<ul style="list-style-type: none"> • Systems Analysis • Sensors • Composite Fabrication 	<ul style="list-style-type: none"> • Carbon MEMS • Semiconductor micro-electronics • Sensors • Actuators • Embedded control system 	<ul style="list-style-type: none"> • Process design • Systems Analysis • Process Measurements & Controls • Process Simulation 	<ul style="list-style-type: none"> • Additive Manufacturing (metal-based 3D Printing) • Thin sheet metal stamping, machining, assembly

California Economy

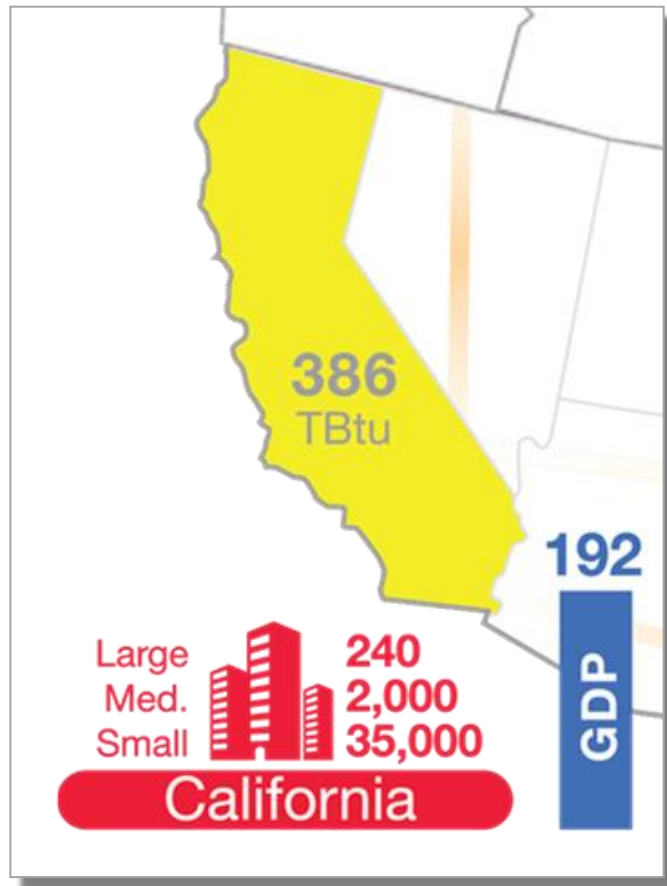
Diverse economy across both geography and industries



- **8th largest economy in the world**
- **Rich manufacturing cross-section**
 - **Manufacturers encompass virtually all industries**
 - **Over 96% of manufacturers are small and medium-sized**
- **Strong technology industry presence**
 - **Silicon Valley**
 - **Silicon Beach**
- **Progressive energy state**
 - **State policies**
 - **Public support**

California Economy

California Energy Data Analysis Reflects a Diverse Manufacturing Ecosystem

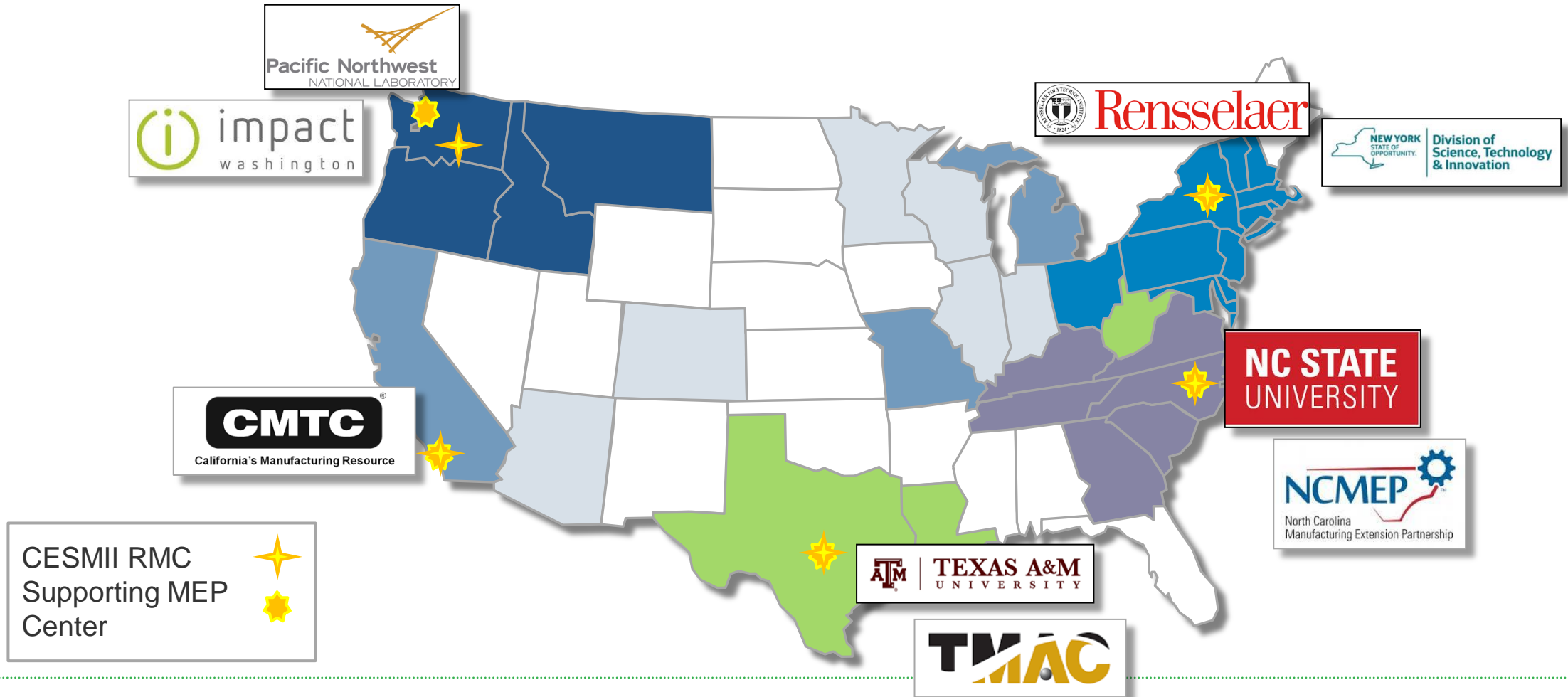


Rank	California			
	Energy (All enterprises)	TBTU	Output (All enterprises)	\$Million
1	Petroleum and Coal Products	100-120	Computer and Electronic Products	57,405
2	Primary Metals	75-85	Petroleum and Coal Products	33,359
3	Food & Beverage Processing	40-50	Chemicals	25,500
4	Chemicals	40-50	Food & Beverage Processing	19,900
5	Nonmetallic Mineral Products	25-30	Aerospace & Other Transp. Eq.	12,585
6	Paper Products	25-30	Miscellaneous	12,395
7	Miscellaneous	15-20	Fabricated Metal Products	11,331
8	Fabricated Metal Products	8-15	Machinery	10,058
9	Plastics and Rubber Products	7-12	Motor Vehicles	5,142
10	Machinery	5-10	Plastics and Rubber Products	4,682
Sum of Top Ten		386	Sum of Top Ten	192,357
Sum of Top Five		314	Sum of Top Five	148,749

Rank	California					
	Small Enterprises (<100 employees)	TBTU	Medium Enterprises (100-499 employees)	TBTU	Large Enterprises (500+ employees)	TBTU
1	Primary Metals	13-19	Petroleum and Coal Products	90-95	Primary Metals	18-22
2	Food & Beverage Processing	5-10	Primary Metals	45-50	Petroleum and Coal Products	15-20
3	Chemicals	5-10	Food & Beverage Processing	22-28	Chemicals	10-15
4	Nonmetallic Mineral Products	2-6	Chemicals	21-27	Food & Beverage Processing	10-15
5	Miscellaneous	2-6	Paper Products	15-20	Nonmetallic Mineral Products	4-8
6	Petroleum and Coal Products	2-4	Nonmetallic Mineral Products	13-19	Paper Products	4-8
7	Paper Products	2-4	Miscellaneous	7-11	Miscellaneous	4-8
8	Fabricated Metal Products	1-3	Fabricated Metal Products	3-7	Fabricated Metal Products	2-5
9	Plastics and Rubber Products	<2	Plastics and Rubber Products	2-6	Plastics and Rubber Products	2-5
10	Machinery	1	Machinery	2-6	Machinery	2-5
Sum of Top Ten		52	Sum of Top Ten	244	Sum of Top Ten	91
Sum of Top Five		40	Sum of Top Five	206	Sum of Top Five	69

National Network Capabilities

CESMII is closely aligned with the Manufacturing Extension Partnership (MEP) Program



Nationally, MEP Centers are supporting technology transfer at nine Manufacturing USA Institutes

- MEP Embedded Staff Program
 - In residence at the Institutes
- EMUSA Leadership Group
 - Facilitating collaboration opportunities across institutes



The CA RMC Ecosystem is ready to serve our members

Northern California Demonstration Center

Unique Capabilities:

- Extensive 3D Printing Facilities
- Extensive simulation technologies
- Paul Wright: primarily advanced manufacturing and energy
- Tarek Zohdi (UCB Coordinator/PI): primarily adv. manufacturing and simulation
- The ME Manufacturing Group

Technologies Demonstrated:

- CAD to Print Technologies
- Printing of Multi-physical Materials

Other Participating UCB Centers:

- The UC Berkeley COE
- The Jacobs Institute for Design Innovation
- Center for Information Technology Research in the Interest of Society
- Computational and Data Science and Engineering Program

University of California Berkeley



3,500 Ft² Demonstration Facility planned for Etcheverry Hall, Department of Mechanical Engineering

The CA RMC Ecosystem is ready to serve our members

Southern California Demonstration Center

Unique Capabilities:

- Microsemi IoT Innovation Lab
- Class 100/1,000 sensors/actuators fabrication facility
- AR/VR Visualization
- Ansys IoT Innovation/Simulation Center
- IBM Watson Think Tank for Advanced Manufacturing
- Evoke Lab for User Experience Design

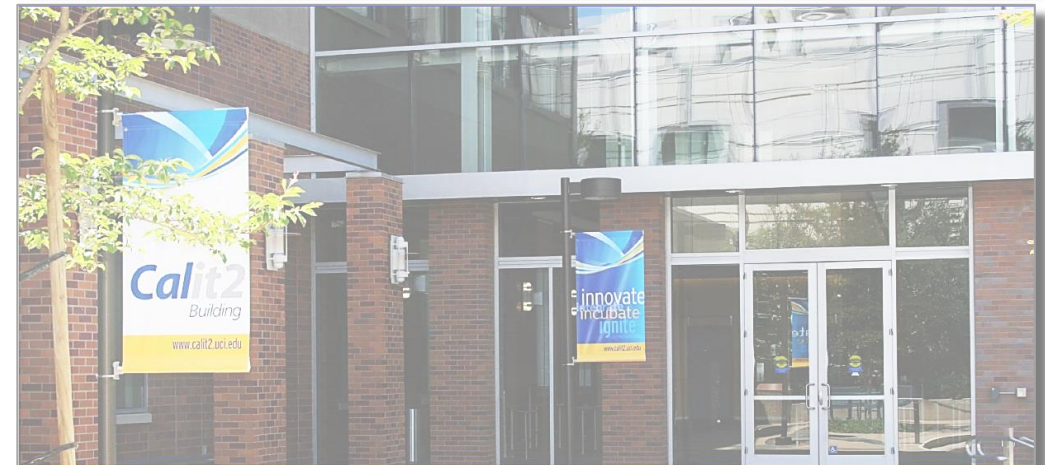
Technologies Demonstrated:

- Workflow centric worker/machine interactive collaboration system
- Cognitive Digital Twins for Reduced Order Modeling
- Augmented/Virtual Worlds for game based simulations
- Cognitive learning systems
- User centric actionable information display

3,000 Ft²
Demonstration
Facility

California Institute for Telecommunications
and Technology (Calit2)

Calit2
UNIVERSITY of CALIFORNIA · IRVINE



Other Participating UCI Centers:

- Cyber-Physical Systems
- Advanced Power and Energy Program
- Institute for Virtual Environments and Computer Games
- Institute for Design and Manufacturing Innovation

The CA RMC Ecosystem is ready to serve our members

Smart Manufacturing Test Bed Capabilities



- Real time integrated process and materials modeling, via reduced order/dimensionality modeling, improved numerical algorithms and co-processors
- Data assimilation and “real time” data analysis of process
- 9600 sq. ft. class 100/1000/10,000 clean room facility
- Power Electronics for smart grid integrated electric vehicle manufacturing
- Machine learning

- Design, fabrication, and embedding of sensors and wireless systems for harsh manufacturing environments
- Smart grid and energy use optimization
- High fidelity models and simulation schemes for chemical plants, energy systems, materials manufacturing processes and water treatment
- Discrete Element, Finite Element and Finite Difference methods
- Smart sensors and distributed controls
- Sustainable Production

- Advanced Manufacturing, Composites, Modeling, Characterization
- Data processing & management, cloud manufacturing software, cyber security & trustworthiness software,
- Adaptive real-time control, adaptive-dynamic programming based control, iterative process control, optimal control techniques, resilient networked control systems

Berkeley
UNIVERSITY OF CALIFORNIA



UCIRVINE

UCLA



USC University of
Southern California

MISSOURI
S&T

The CA RMC Ecosystem is ready to serve our members

Workforce Development Capabilities



- Device/Software Scalable Augmented/Virtual Reality Technology Enabled by Smart Worker IoT data derived from CESMII Testbed operations
- Enhanced with Cognitive Digital Twins of process and workflow simulations augmented with CESMII platform data

- Training students to map and analyze energy use in the built environment
- Automation Lab with rapid prototype, 3-D Printers and the latest CNC machines
- Micro-grid demonstration by employing renewable energy and alternative fuel source
- Curriculum development

- Apprenticeship and internship development
- Certificate and degree program development
- Comprehensive career pathways development (K-12, Community Colleges and University partnerships)
- Customized training in all areas of manufacturing



California RMC Capabilities Summary

Sensors, Controls & Algorithms, Platforms , HPC

Energy Sustainability, Economic Development, Workforce Development, etc.



Hold Questions